



GAT MONTHLY MEMBERSHIP PROGRESS REPORT

Results as of: 3/31/2022

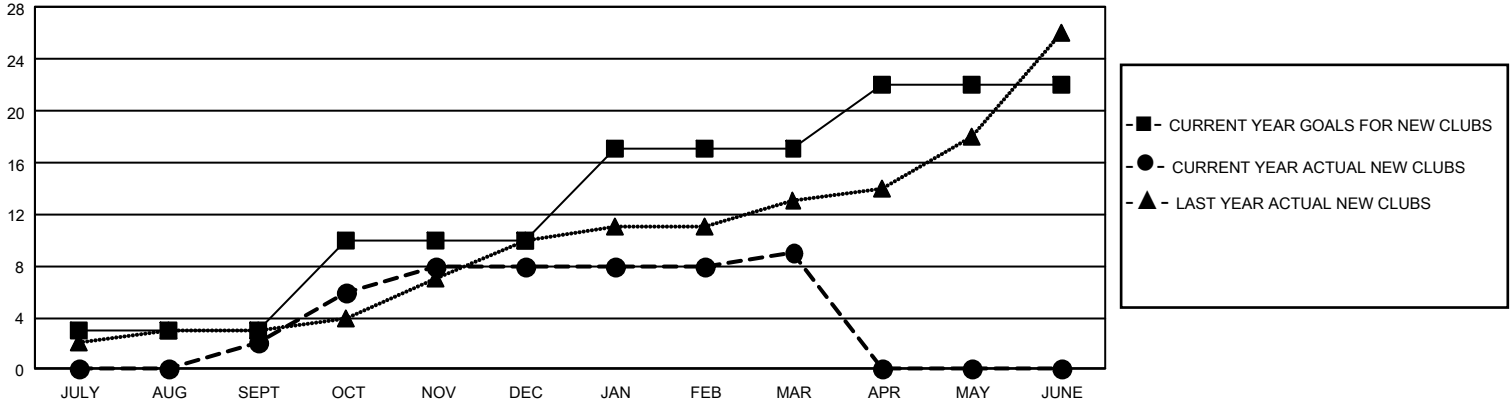
GMT Constitutional Area 2, Group B

REPORT DOES NOT INCLUDE CLUBS IN UNDISTRICTED AREAS.

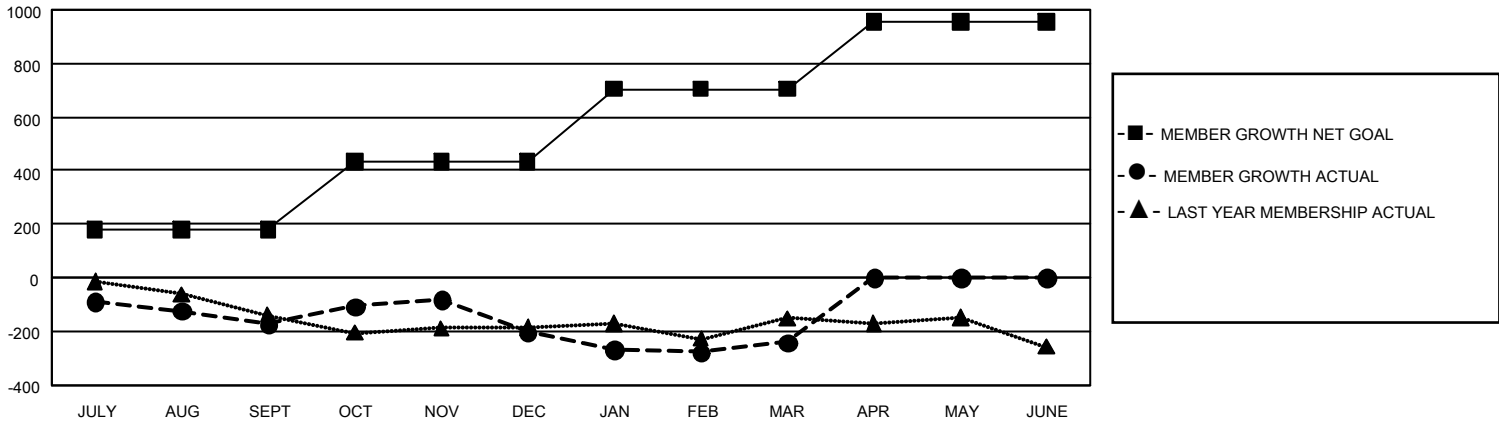
| Clubs | | | |
|-----------------------|---------------|-----------|---------------|
| RESULTS FOR 2021-2022 | | | |
| QUARTER | NEW CLUB GOAL | NEW CLUBS | DROPPED CLUBS |
| JULY/AUG/SEPT | 9 | 2 | 3 |
| OCT/NOV/DEC | 21 | 6 | 6 |
| JAN/FEB/MAR | 21 | 1 | 3 |
| APR/MAY/JUNE | 15 | 0 | 0 |

| Members | | | |
|-----------------------|------------------------|----------------------|--|
| RESULTS FOR 2021-2022 | | | |
| QUARTER | MEMBER GROWTH NET GOAL | MEMBER GROWTH ACTUAL | DROPPED MEMBERS ACTUAL (including transfers) |
| JULY/AUG/SEPT | 180 | 308 | 429 |
| OCT/NOV/DEC | 255 | 628 | 600 |
| JAN/FEB/MAR | 270 | 424 | 412 |
| APR/MAY/JUNE | 250 | 0 | 0 |

GOALS AND ACTUAL NEW CLUBS CUMULATIVE



GOALS AND ACTUAL MEMBERS CUMULATIVE



| | | | |
|------------------------|--|---|-----------------|
| DROPPED CLUBS: 12 | 326 CLUBS OF 710 ADDED 1 OR MORE NEW MEMBERS | <u>GENDER DISTRIBUTION</u> | |
| | | MALE | 10,326 (64.31%) |
| <u>DROPPED MEMBERS</u> | | FEMALE | 5,729 (35.68%) |
| | | NON BINARY | 1 (0.01%) |
| DECEASED | 237 | PREFER NOT TO ANSWER | 1 (0.01%) |
| CLUB CANCELLED | 51 | TOTAL FAMILY UNIT MEMBERS | 3,067 |
| OTHER | 1,153 | FAMILY MEMBERS PAYING HALF DUES | 1,580 |
| TOTAL | 1,441 | CLICK HERE FOR CUMULATIVE MEMBERSHIP DATA | |